

# Objekt I

Detention Centre Prison Hospital Berlin-Hohenschönhausen

A photographic work by Ruth Stoltenberg

Ruth Stoltenberg's photographs depict the former Stasi prison in Berlin-Hohenschönhausen and its accompanying prison hospital from a personal perspective. These two places of terror and violence, along with her intense conversations with formerly incarcerated witnesses, moved the photographer so profoundly that a deeply sensitive photographic project was able to develop as a result. In her images, Stoltenberg allows the spaces and objects themselves to speak about the horror that took place there.

Photographs of chairs are like a red thread through which the series and remind viewers of the prison's original purpose: interrogations and "confessions", demonstrations of power and the breaking of the will. These chairs are where the prisoners sat during their examinations and statements. Over and over again the same room, with the same interrogator, for the entire length of their detention. The variety of the colourfully patterned chairs in front of those same walls only seems to contradict the uniformity of the interrogation methods. For in order to make the prisoner more open to talking, the Stasi specifically attempted to create a kind, cosy atmosphere to contrast the prisoners' sparsely arranged cells. Ruth Stoltenberg mirrors this mechanism in her juxtaposition of colour photographs of room details with black-and-white shots of the underground cells in what was known as the submarine section.

"The photographs of Ruth Stoltenberg cannot make the past visible, but their depictions of the structures through which power is exercised over people are so powerful that they sharpen our awareness of injustice." Wolfgang Zurborn

Ruth Stoltenberg (\*1962) received her photographic training at the Neue Schule für Fotografie in Berlin as well as at the Lichtblick School in Cologne, after previously working as a television editor. She quickly developed her own artistic signature and successfully completed numerous long-term projects. The artist's work primarily focuses on, and sees her intensively engaging with, places that have been shaped, abandoned or left in a state of upheaval by history. Her work can be found in a number of prominent collections and has been exhibited, recognised and published nationally as well as internationally.



**Vernissage Thursday, 17 January, 7pm, Introduction: Franziska Schmidt**  
**HAUS am KLEISTPARK | PROJEKTRAUM, Grunewaldstr. 6–7, 10823 Berlin**  
**17.1. – 24.3.2019, Tues through Sun, 11am – 6pm, Free admission**  
**[www.hausamkleistpark.de](http://www.hausamkleistpark.de), [www.ruthstoltenberg.de](http://www.ruthstoltenberg.de)**

Information: Gallery Director Barbara Esch Marowski, 030/90277-6964, [esch-marowski@ba-ts.berlin.de](mailto:esch-marowski@ba-ts.berlin.de)  
An exhibition of the Department of Art, Culture, Museums Tempelhof-Schöneberg

# Objekt I

Detention Centre Prison Hospital Berlin-Hohenschönhausen

A photographic work by Ruth Stoltenberg



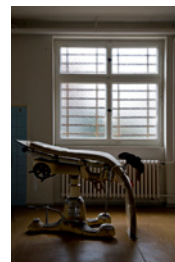
©Ruth Stoltenberg  
*Objekt I - 1, 2015*



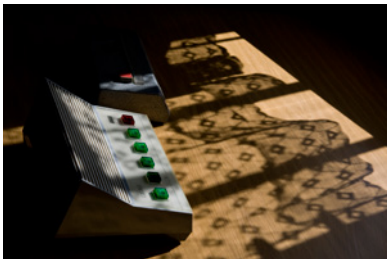
©Ruth Stoltenberg  
*Objekt I - 4, 2015*



©Ruth Stoltenberg  
*Objekt I - 2, 2015*



©Ruth Stoltenberg  
*Objekt I - 5, 2015*



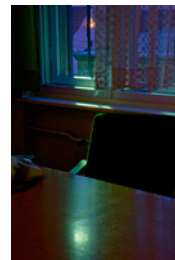
©Ruth Stoltenberg  
*Objekt I - 3, 2015*



©Ruth Stoltenberg  
*Objekt I - 8, 2015*



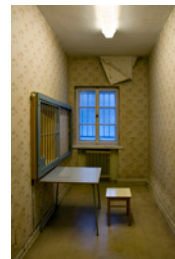
©Ruth Stoltenberg  
*Objekt I - 6, 2015*



©Ruth Stoltenberg  
*Objekt I - 10, 2015*



©Ruth Stoltenberg  
*Objekt I - 7, 2015*



©Ruth Stoltenberg  
*Objekt I - 9, 2015*



**Vernissage Thursday, 17 January, 7pm, Introduction: Franziska Schmidt**  
**HAUS am KLEISTPARK | PROJEKTRAUM, Grunewaldstr. 6-7, 10823 Berlin**  
**17.1. – 24.3.2019, Tues through Sun, 11am – 6pm, Free admission**  
**[www.hausamkleistpark.de](http://www.hausamkleistpark.de), [www.ruthstoltenberg.de](http://www.ruthstoltenberg.de)**

Information: Gallery Director Barbara Esch Marowski, 030/90277-6964, [esch-marowski@ba-ts.berlin.de](mailto:esch-marowski@ba-ts.berlin.de)  
An exhibition of the Department of Art, Culture, Museums Tempelhof-Schöneberg